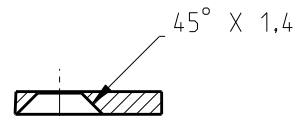
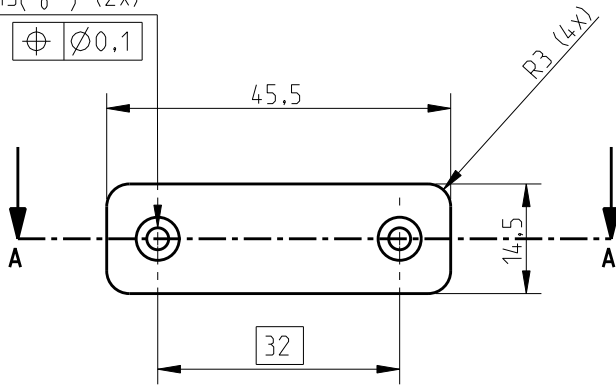
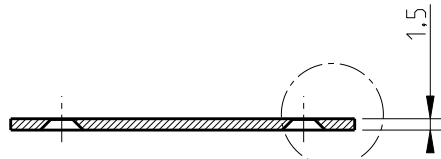


Ø2.9 H13(+0.14) (2x)

⊕ Ø0.1



DETAIL HOLE WITH CHAMFER
SCALE 2/1



SECTION A-A

SEE DETAIL HOLE WITH CHAMFER

Note Machining:

- Machining process in accordance with QAM020
- Yellow (gold) chromated according to MIL-C-5541E Class 1A
- Surface roughness Ra 1.6, except where stated
- General $\sqrt{\text{ }}$: ISO 2768fH, except where stated
- Part shall be clean and free of all burrs and sharp edges according to ISO10135-2

$\sqrt{\text{ }}$ -0.5
-0.2

01	554881	Removal of screws and spacers	17/JAN/2008	NVA					
00		Article creation	12/12/05	PAKO					
INDEX	ECN	MODIFICATION DESCRIPTION	DATE	NAME					
SEE NOTE		TREATMENT AND FINISH	MATERIAL	AI_MG3					
BARCO QUALITY STANDARD QAM 001		PROJ. EURO	SCALE	1/1					
***** = FUNCTIONAL DIMENSIONS TO CHECK		MM							
ISO2768fH - Gen. tol. for milling of metals, except where stated (in mm)		GENERAL QUALITY CLASS	B	PHOTOGRAPHIC FILM ADDED					
		EXCEPTIONAL QUALITY CLASS		PART IN ACCORDANCE WITH DIGITAL FILE					
LIN.	0	6	30	600	1000	HOLE Ø	PART NAME		
DIM.	6	30	600	1000	2000		INTERC ECRO CVR PLT		
TOL.	±0.05	±0.10	±0.15	±0.20	±0.50	±0.10	PROJECT		
							DHA 2108		
							ALL RIGHTS STRICTLY RESERVED. REPRODUCTION OR ISSUE TO THIRD PARTIES IN ANY FORM WHATSOEVER, IS NOT PERMITTED WITHOUT WRITTEN AUTHORITY FROM BARCO		
BarcoView							K602461		
							SHEET 1 OF 1		
							01		
							A4		